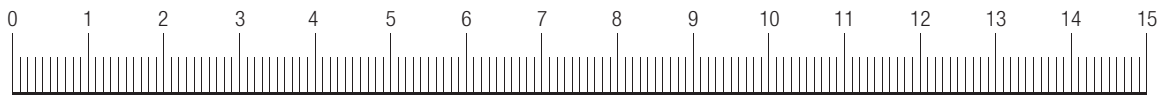


IMPORTANT: Ensure the printout of this guide is at the correct scale. The printed ruler below, must be exactly the same length as a real ruler. Make sure your printer drivers are up-to-date. PDFs should print to scale correctly, but if not, adjust the size of this printout using the zoom in your printer settings. See page 2.

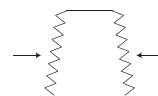


Thread diameter (parallel)

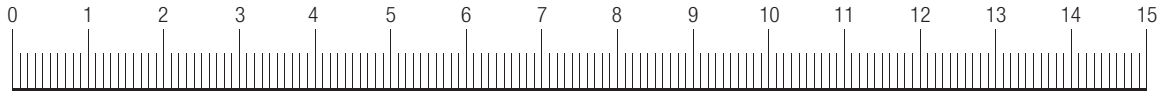


EZ-114	3/8"-24 UNF (9.53mm)	EZ-3	20mm-1.5
EZ-125	10mm-1.0	EZ-7B	22mm-1.5
EZ-124	10mm-1.25	EZ-206	7/8"-14 UNF (22.23mm)
EZ-103	12mm-1.25	EZ-208	7/8"-18 UNF (22.23mm)
EZ-109	12mm-1.5	EZ-8	24mm-1.5
EZ-107	12mm-1.75	EZ-6	24mm-2.0
EZ-101	1/2"-20tpi (12.7mm)	EZ-5	25mm-1.5
EZ-111	14mm-1.25	EZ-203	1"-18 UNF (25.4mm)
EZ-106	14mm-1.5	EZ-209	1"-14 UNC (25.4mm)
EZ-113	9/16"-18tpi UNF (14.29mm)	EZ-207	26mm-1.5
EZ-108	16mm-1.5	EZ-210	1 1/16"-12 UNF (26.99mm)
EZ-102	5/8"-18 UNF / PF-3/8" (16.6mm)	EZ-211	27mm-2.0
EZ-104	18mm-1.5	EZ-205	1 1/8"-12 UNF (28.58mm)
EZ-2	18mm-1.5	EZ-7	30mm-1.5
EZ-204	3/4"-16 UNF (19.05mm)	EZ-215	1 5/16"-12 UNF (33.34)
EZ-105	20mm-1.5		

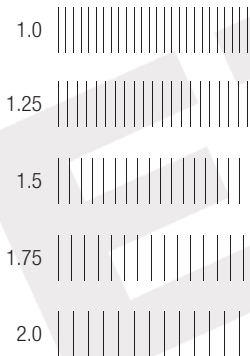
Thread diameter (tapered)



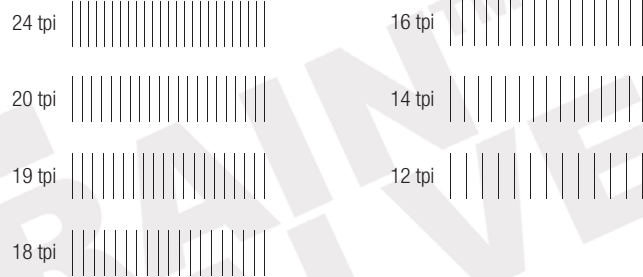
EZ-115	tapered	NPT 1/4"-18tpi (13.72mm)	EZ-201	tapered	NPT 3/4"-14 (26.67mm)
EZ-110	tapered	NPT 3/8"-18tpi (17.15mm)	EZ-200	tapered	NPT 1"-12tpi (33.4mm)
EZ-202	tapered	NPT 1/2"-14tpi (20.96mm)			



Metric Pitch (mm)

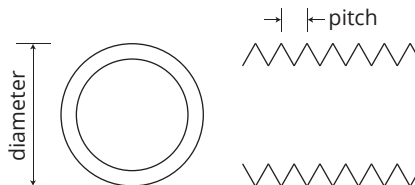


Imperial Pitch (threads per inch)



How to use this measuring guide

1. Ensure the printout of this guide is at the correct scale. The printed ruler (above) must be exactly the same length as a real ruler. Make sure your computer printer drivers are up-to-date. PDFs should print to scale correctly, but if not, adjust the size of this printout using the zoom in your printer settings.



2. Determine diameter

Measure the diameter of the thread using vernier calipers for the most accurate measurement. If you don't have verniers, use an adjustable spanner. Most have millimeter markings on them. If your drain plug has a tapered thread, measure at the middle threads. Compare with diameters on page 1.

3. Determine pitch

Smear a small amount of oil on the threads. Roll the thread onto a clean piece of paper. Use the imprint of the threads to compare with this guide to determine pitch size.

Metric or Imperial?

In general, Japanese models are metric, Europeans are mostly metric, Americans can be metric or imperial. If you are unsure, contact us with your measurements and we can help determine the correct valve.

See the video for this guide at www.ezoil.com.au

Application listing at www.ezoil.com.au